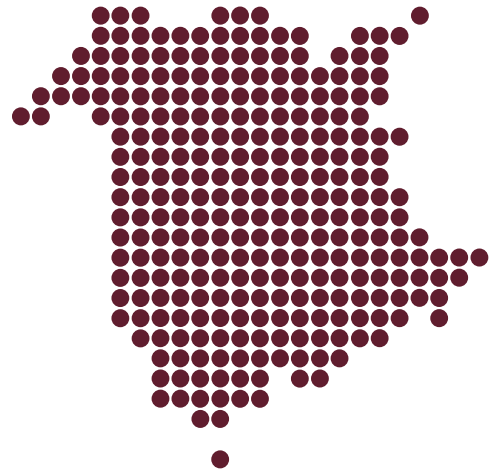


Accessibility

YOUR VOTE COUNTS

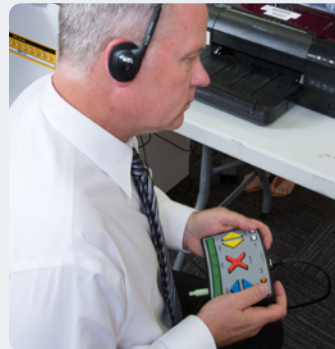


ElectionsNB.ca

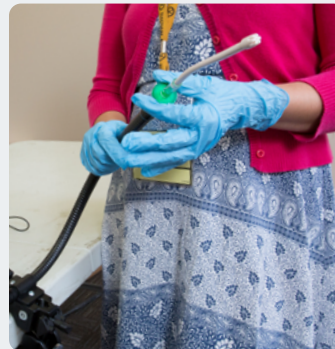
Elections NB offers a variety of options for voters with a physical and/or cognitive disability to vote and to mark a ballot.



1. Using a large-grip scented reduced marker



2. Braille controller with audio
*only available at the returning offices



3. Sip and Puff with audio
*only available at the returning offices

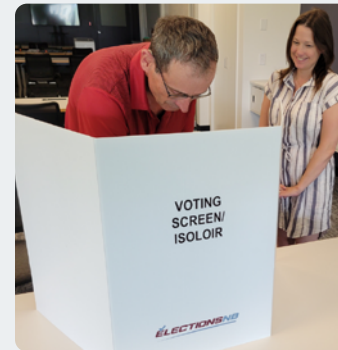
Please join our efforts of improving accessibility for the people of New Brunswick by spreading the word throughout your community. If you have any questions or comments related to any accommodations please feel free to contact us.



4. Paddles with audio
*only available at the returning offices



5. Braille instructions sheet (Provincial elections only)



6. With a friend
7. Mail-in ballot

OTHER ACCOMMODATIONS

SPECIAL BALLOTS

Special Voting Officers can bring special ballots to those electors who are unable to vote in person due to illness or incapacity.

Special ballots, which are available at all returning offices, are also used for electors who are in nursing homes, special care homes, federal or provincial correctional facilities and patients in the hospital.

A voter from an electoral district can also use a special ballot to vote from elsewhere in the province for a candidate in the place where they normally live.

POCKET TALKERS

Pocket talkers are personal amplifiers that help improve communication in difficult listening situations. They are designed for individuals with hearing difficulties who don't have a hearing aid. These amplifiers are portable and can be used in one-to-one interactions with our election officials.

Pocket talkers are available at all Returning Offices.



EXTENDED VOTING PERIOD

Elections NB offers greater flexibility to electors to choose an opportunity to vote that is more convenient for them. In addition to being able to vote at the advance polls voters can use a special ballot to vote for a candidate in any electoral district where that elector is qualified to vote. Special ballots are available at any returning office.



LEVEL ACCESS POLLING STATIONS

Elections NB recognizes the importance of finding returning offices and voting places that are accessible to all electors. We make every effort to find facilities that are barrier free and where possible close to bus routes.

LARGE FONT / HIGH CONTRAST BALLOT

Elections NB prints ballots using a white font text on a black background. This makes the task of reading the candidates' names much easier.

MAGNIFIERS

Magnifiers are provided at all returning offices and polling stations. If you have your own magnifier, you can bring it with you.

SIGN LANGUAGE INTERPRETER

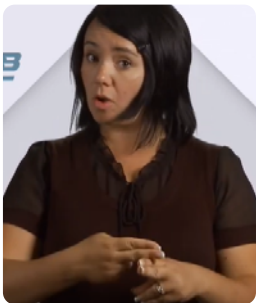
Visual language (ASL/LSQ) services are also available through:

New Brunswick Deaf & Hard of Hearing

Phone: 506-633-0599

interpretercoordinator@nbdhhs.com

This service is available **by appointment only** during advance polling and on Election Day.



CONTACT ELECTIONS NB

Toll Free: 1-888-858-8683

Fax: (506) 457-4926

Email: info@electionsnb.ca

Website: electionsnb.ca