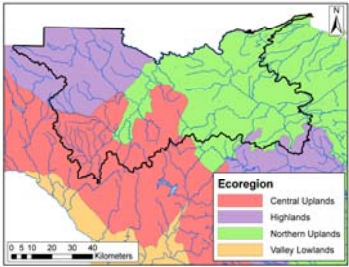


Location

The Restigouche River is located within the Restigouche, Madawaska and Victoria counties of New Brunswick. The river flows from the Chic-Choc Mountains, located in Québec, and continues in an easterly direction before emptying into the Baie des Chaleurs. The New Brunswick portion of the watershed is 6603 km².



Physical Setting and Climate



This region is considered to have a northern temperate cool climate. The average summer temperatures are 14 to 15°C and winter temperatures average around -11 to -12 °C. The Restigouche watershed receives about 1000 mm of precipitation annually.

Fish Community

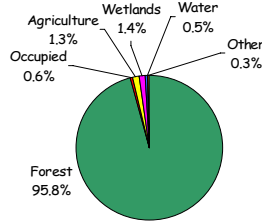
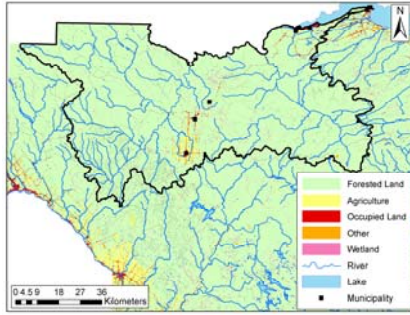
A fish diversity study was conducted during 2002 by the University of New Brunswick Freshwater Unit. A total of 15 sites along the main stem and major tributaries of the Restigouche River were sampled. A total of 14 species were observed, with young Atlantic salmon and slimy sculpin dominating the fish community.

New Brunswick Watersheds

Restigouche River

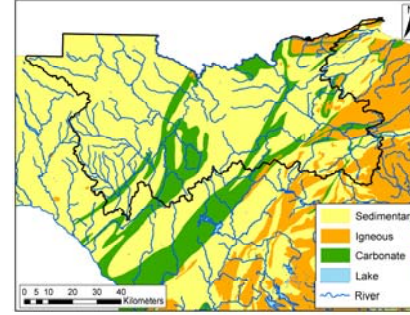
Environmental Reporting Series 2007

Land Use



Land use in the Restigouche watershed is predominantly forested land.

Geology



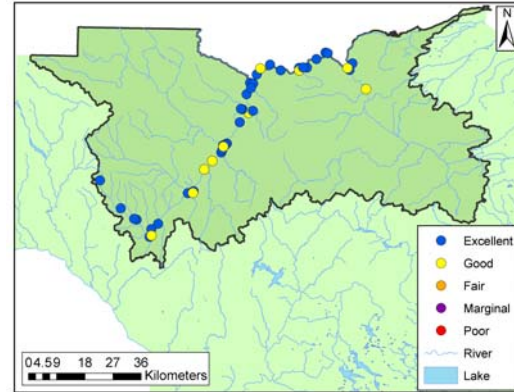
Water Quality Survey (1997-2006)

The Water Quality Index (WQI) is a tool that allows water to be classified into different categories based on the CCME Guidelines for Freshwater Aquatic Life. The index is a number between 0 and 100, with zero representing poor water quality and 100 representing excellent water quality. The categories for the index are as follows:

Excellent: 95-100 Marginal: 45-64
 Good: 80-94 Poor: 0-44
 Fair: 65-79

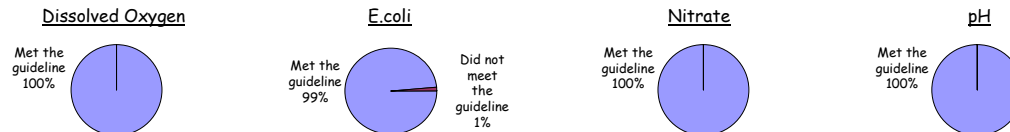
The following parameters are included in the Water Quality Index: aluminum, ammonia, arsenic, chloride, copper, dissolved oxygen, iron, lead, nickel, nitrate, pH, sulphate, total phosphorus, and zinc.

The map (right) depicts the location of the sample sites within the Restigouche watershed and indicates the calculated WQI rating for each site.



Key Indicators

In addition to using the CCME Water Quality Index, four key indicators of water quality were evaluated against available guidelines. E. coli is compared to recreational use guidelines, while the other indicators are compared with freshwater aquatic life guidelines.



Community Involvement

The Restigouche River Watershed Management Council was established in 2001. It is a partnership between salmon clubs, camp owners, recreation groups, the Conservation Council, First Nations, industry, research institutions and federal, provincial and municipal governments. The council introduced a "Carry in - Carry Out" program to encourage proper management of trash.

The Restigouche River has many activities to offer the outdoor enthusiast.



Popular activities in the basin include salmon fishing, hunting, canoeing, camping, hiking, snowshoeing and snow mobiling. The Restigouche recreational salmon fishery is world renowned.

Summary

- Based on the WQI, 35 of the sample sites were found to be excellent and 10 were good.

- Of the four key indicators, E. coli did not meet the recreational use guideline in 1% of the samples. This could be an indication of the impacts of human activities on the river. All other indicators were found to be within their respective guidelines.

Additional Information

This watershed summary was based on the report by the Canadian Rivers Institute (Restigouche River Water Quality 1997-2000) submitted to the Department of Environment in 2002, as well as water quality data collected by the Department of Environment.

For additional information concerning this watershed, please contact the Department of Environment, Sciences and Reporting Branch, at (506) 457-4844.